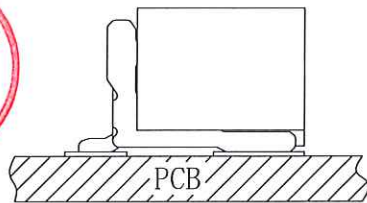


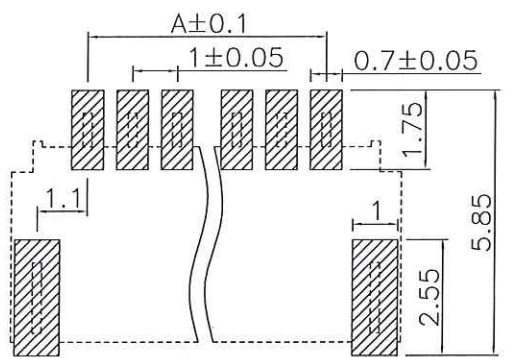
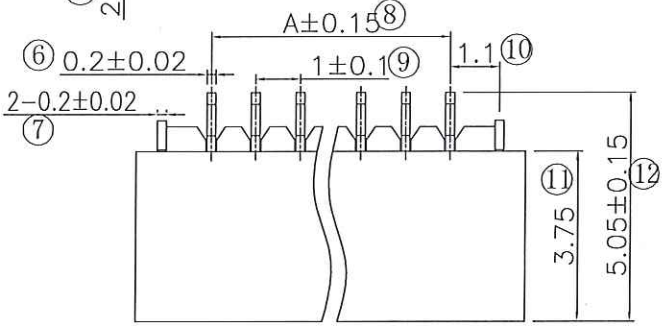
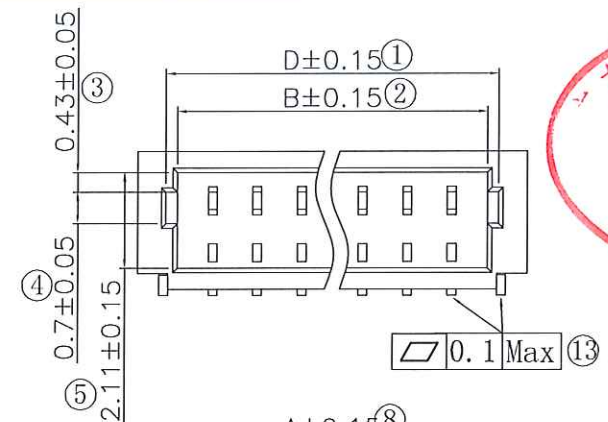
The product using material and processing must conform to the "WI-PZ-142"HSF technical standard control requirements

RoHS+HF

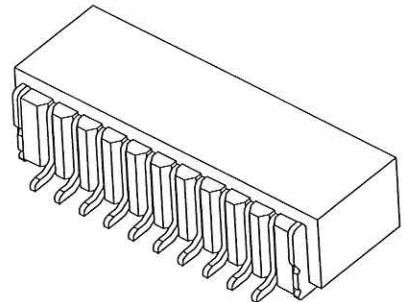
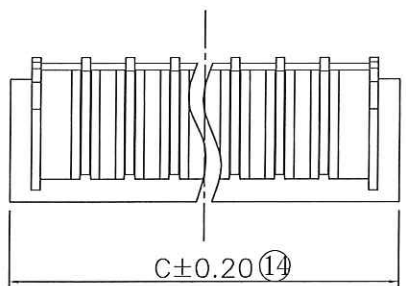


NOTE:

- MATERIAL SPECIFICATION:
 - 1-1.HOUSING:LCP UL94V-0
 - 1-2.SOLDERING LUG:PHOSPHOR BRONZE
 - 1-3.CONTACTS:PHOSPHOR BRONZE
 - PLATING SPECIFICATION:
 - 2-1.CONTACTS: TIN/AU PLATED OVER ALL.
 - MECHANICAL PERFORMANCE:
 - 3-1.INSERTION FORCE: 0.3kgf/Pin MAX
 - 3-2.REMOVAL FORCE: 0.03kgf/Pin MIN
 - 3-3.DURABILITY: 50 CYCLES.
 - ELECTRICAL PERFORMANCE:
 - 4-1. RATED CURRENT : 1A AC,DC
 - 4-2. RATED VOLTAGE : 50V AC/DC
 - 4-2-INSULATION RESISTANCE: 100MΩ MIN
 - CONTACT RESISTANCE : 20mΩ(MAX.)
 - 4-3.WITHSTANDING VOLTAGE: 500V AC/minute
 - ENVIRONMENTAL PERFORMANCE:
 - OPERATING TEMPERATURE: -25°C~+85°C.
 - PACKAGE SPEC: REEL
 - P/P/N: A1002 W 9-1 XX 2 X X 0 \triangle A1
- SERIES NO: _____
 CONNECTOR: W-WAFER
 ANGLE: 9-90°
 ROW NO: 1-SINGLE ROW
 PIN Q'PY: 02~20
- COLOR:
 A-BLACK
 K-WHITE
 S-NATURE
- PLATING:
 A-ALL AU G/F
 C-BRIGHE TIN
 D-MATTE Tin
- TERMIPOINT:
 2-SMT



印制线路板

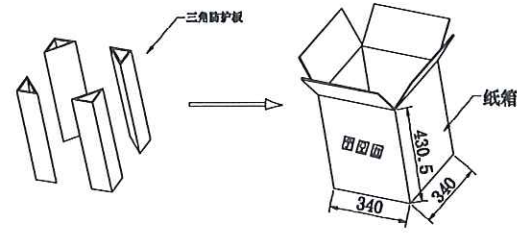
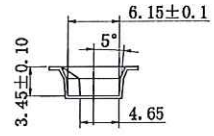
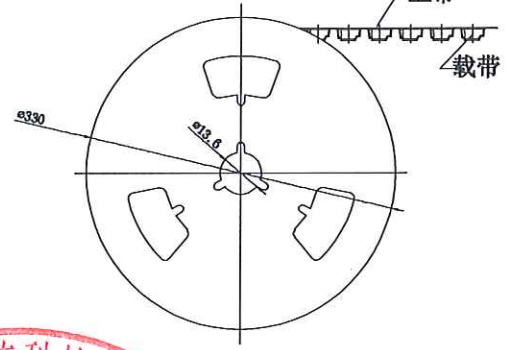
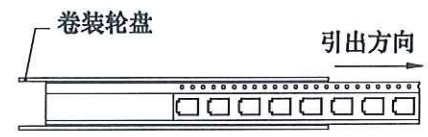
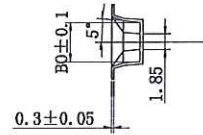
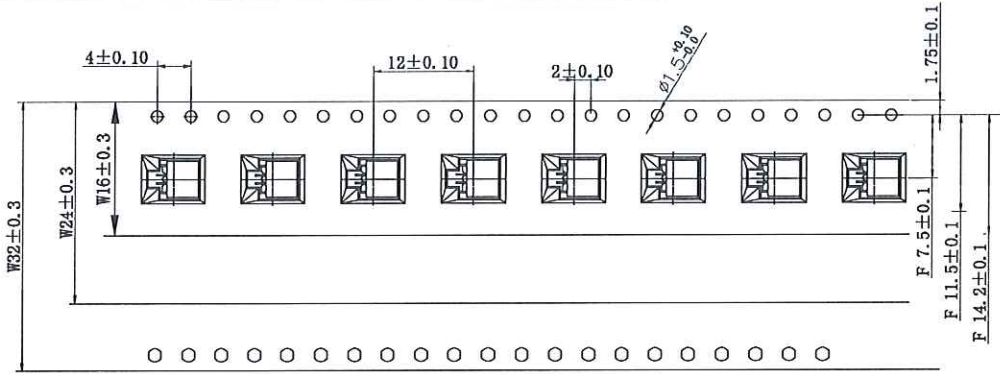


Circuits	Dimensions (mm)				Circuits	Dimensions (mm)			
	A	B	C	D		A	B	C	D
02P	---	2.5	4.30	3.20	12P	11.0	12.6	14.30	13.20
03P	2.0	3.6	5.30	4.20	13P	12.0	13.6	15.30	14.20
04P	3.0	4.5	6.30	5.20	14P	13.0	14.6	16.30	15.20
05P	4.0	5.6	7.30	6.20	15P	14.0	15.6	17.30	16.20
06P	5.0	6.5	8.30	7.20	16P	15.0	16.6	18.30	17.20
07P	6.0	7.6	9.30	8.20	17P	16.0	17.6	19.30	18.20
08P	7.0	8.5	10.30	9.20	18P	17.0	18.6	20.30	19.20
09P	8.0	9.6	11.30	10.20	19P	18.0	19.6	21.30	20.20
10P	9.0	10.6	12.30	11.20	20P	19.0	20.6	22.30	21.20
11P	10.0	11.6	13.30	12.20					

REV.	REVISION RECORD	DATE		GENERAL TOLERANCES		SCALE: 1:1	NAME	DATE	PART.NO:	DWG.NO:	
A0	NEW RELEASE	21.01.13		LINEAR	ANGLES	APPROVED	梁科	2024.5.27	A1002W9-1XX2XX0	ENDE05	
A1	PART NUMBER RENEWAL			0.0±0.35	X'REF±6°	DESIGNER	梁科	2024.5.27	TITLE:		
				UNIT:mm	0.00±0.25	X'±3°	DRAWN	肖雨曦	2024.5.27	Pitch 1.00mm 90°SH 单排卧贴 Wafer	
			SIZE: A4	0.000±0.10	X'X' ±2°						

The product using material and processing must conform to the "WI-PZ-142"HSF technical standard control requirements

RoHS+HF

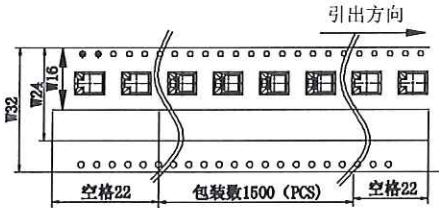


1. 上带剥离力:

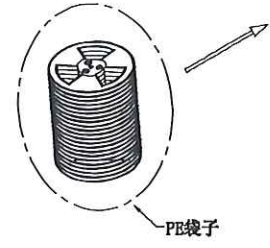


A	15° ~ 0°
F	20° ~ 70° (g)

2. 带子预空格:



3. 载带材料规格: PS 白色料防静电, 厚度 0.30mm.



Circuits	载带尺寸			Circuits	载带尺寸			卷装包装明细			
	W	BO	F		W	BO	F	PIN	每卷包装数	每盘数量	每件数量
02P	16.0	4.65	7.50	12P	24.00	15.65	11.50	02P-07P	1500 (PCS)	20 (盘)	30 (K)
03P	16.0	5.65	7.50	13P	24.00	16.65	11.50	08P-13P	1500 (PCS)	14 (盘)	21 (K)
04P	16.0	7.65	7.50	14P	32.00	17.65	14.20	14P-16P	1500 (PCS)	11 (盘)	16.5 (K)
05P	16.0	8.65	7.50	15P	32.00	18.65	14.20				
06P	16.0	9.65	7.50	16P	32.00	19.65	14.20				
07P	24.0	10.65	11.50								
08P	24.0	11.65	11.50								
09P	24.0	12.65	11.50								
10P	24.0	13.65	11.50								
11P	24.0	14.65	11.50								

REV.	REVISION RECORD	DATE	UNIT:mm	GENERAL TOLERANCES		SCALE: 1:1	NAME	DATE	PART.NO:	DWG.NO:	万连科技 WanLian Technology Co., Ltd
A0	NEW RELEASE	21.01.13		0.00±0.25	ANGLES	APPROVED			A1002W9-1XX2XX0	ENDE05	
A1	PART NUMBER RENEWAL		0.00±0.10	X'REF±6°	DESIGNER					REV: A1	SHEET: 2/2
			SIZE: A4	X'X' ±2'	DRAWN			TITLE: Pitch 1.00mm 90°SH 单排贴片 Wafer			