

Specifications:  
 Rated Voltage : 250V AC/DC  
 Rated Current : 3A AC,DC  
 Withstand Voltage : 1000V AC/minute  
 Contact Resistance : 20mΩ(MAX.)  
 Insulation Resistance : 1000MΩ(MIN.)  
 Temperature Range : -25°C~+85°C  
 Pin Terminal: Barss/Tin-plated  
 Solder Tabs: Barss/Tin-plated  
 The product using material and processing must conform to the "WI-PZ-142"HSF technical standard control requirements

- 12501W90-NPA-S-HX-XX-NK-R  
 ① ② ③④⑤⑥ ⑦ ⑧ ⑨
- ① Series No.
  - ② W90 : Side Contact  
W00 : Up Contact
  - ③ No. of Circuits
  - ④ A: Black
  - ⑤ S : SMT type
  - ⑥ H1 : Nylon 9T  
H2 : HTN
  - ⑦ HF : Halogen Free
  - ⑧ NK : No Mark
  - ⑨ R : Tape & Reel

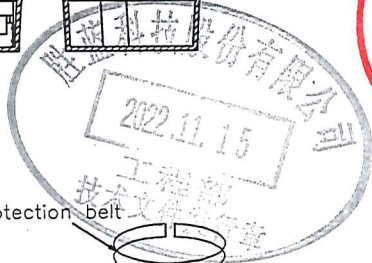
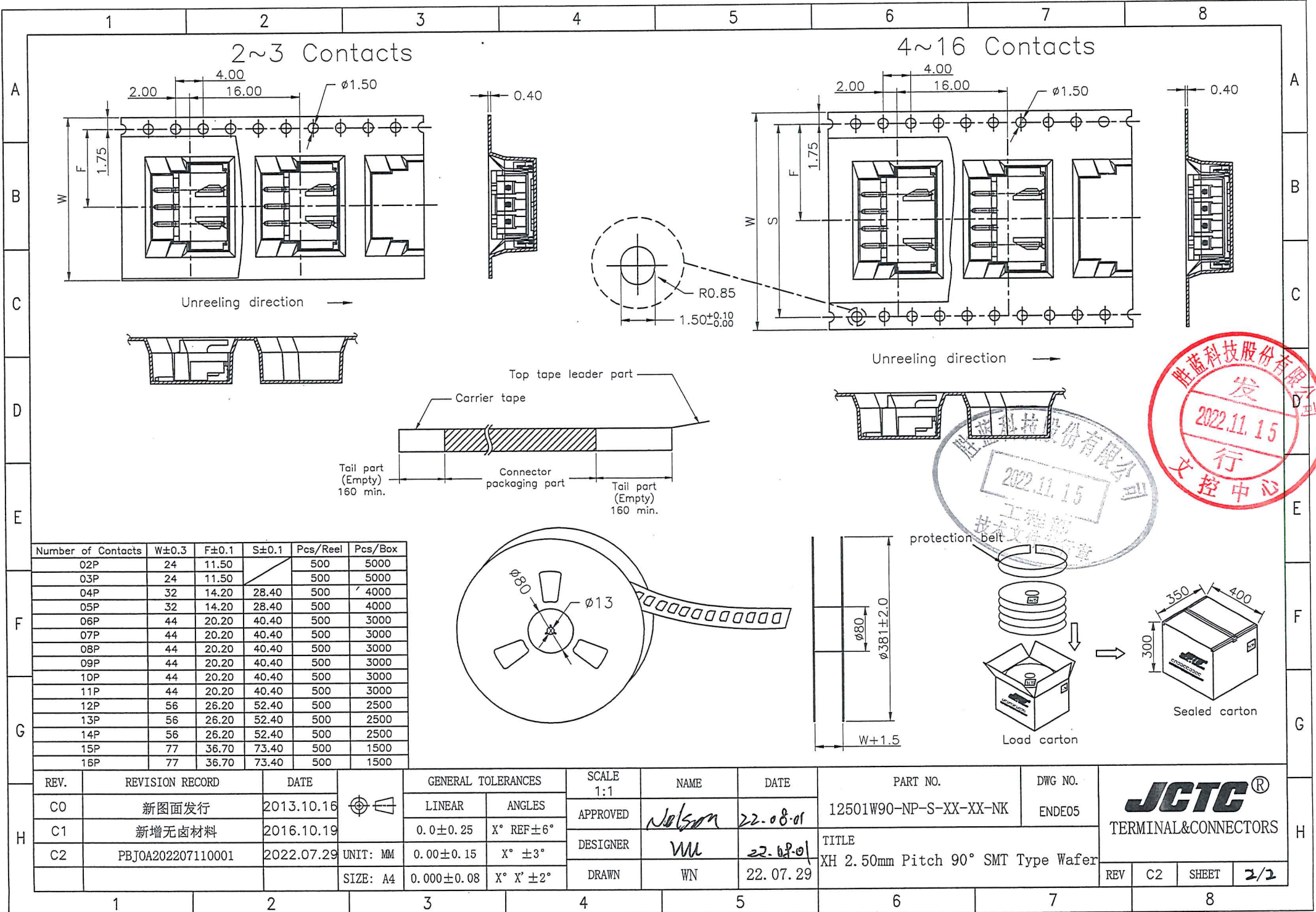
Circuits	Dimensions	
	A	B
2P	--	10.00
3P	5.00	12.50
4P	7.50	15.00
5P	10.00	17.50
6P	12.50	20.00
7P	15.00	22.50
8P	17.50	25.00
9P	20.00	27.50
10P	22.50	30.00
11P	25.00	32.50
12P	27.50	35.00
13P	30.00	37.50
14P	32.50	40.00
15P	35.00	42.50
16P	37.50	45.00

Part No.	Material	Color
12501W90-NP-S-H1-NK-R	Nylon 9T,UL94V-0	Natural(Beige)
12501W90-NP-S-H2-HF-NK-R	HTN,UL94V-0	Natural(Beige)
12501W90-NPA-S-H2-HF-NK-R	HTN,UL94V-0	Black
12501W90-NPG-S-H3-HF-NK-R	Nylon 10T,UL94V-0	Blue

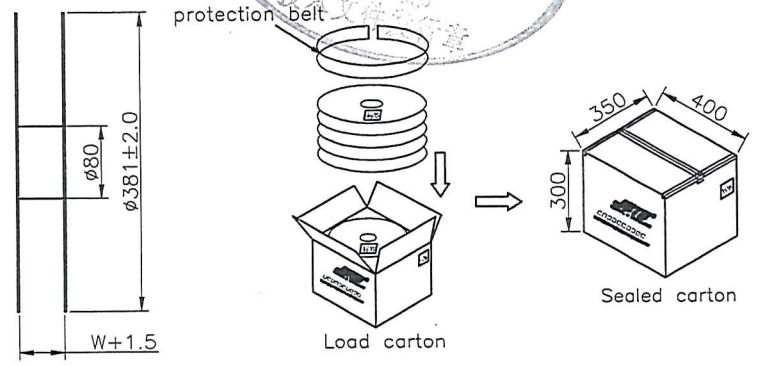
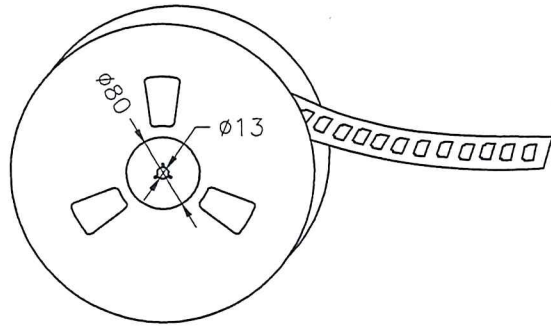
REV.	REVISION RECORD	DATE	GENERAL TOLERANCES		SCALE	NAME	DATE	PART NO.	DWG NO.
CO	新图面发行	2013.10.16	LINEAR	ANGLES	1:1			12501W90-NP-S-XX-XX-NK	ENDE05
C1	新增无卤材料	2016.10.19	0.0±0.25	X° REF±6°	APPROVED	Nelson	22.08.01	TITLE XH 2.50mm Pitch 90° SMT Type Wafer	
C2	PBJOA202207110001	2022.07.29	0.00±0.15	X° ±3°	DESIGNER	WN	22.08.01		
			0.000±0.08	X° X' ±2°	DRAWN	WN	22.07.29		

**JGTC**®  
 TERMINAL&CONNECTORS

REV	C2	SHEET	1/2
-----	----	-------	-----



Number of Contacts	W±0.3	F±0.1	S±0.1	Pcs/Reel	Pcs/Box
02P	24	11.50		500	5000
03P	24	11.50		500	5000
04P	32	14.20	28.40	500	4000
05P	32	14.20	28.40	500	4000
06P	44	20.20	40.40	500	3000
07P	44	20.20	40.40	500	3000
08P	44	20.20	40.40	500	3000
09P	44	20.20	40.40	500	3000
10P	44	20.20	40.40	500	3000
11P	44	20.20	40.40	500	3000
12P	56	26.20	52.40	500	2500
13P	56	26.20	52.40	500	2500
14P	56	26.20	52.40	500	2500
15P	77	36.70	73.40	500	1500
16P	77	36.70	73.40	500	1500



REV.	REVISION RECORD	DATE	GENERAL TOLERANCES		SCALE	NAME	DATE	PART NO.	DWG NO.	 <b>JCTC</b> ® TERMINAL&CONNECTORS			
C0	新图面发行	2013.10.16	LINEAR	ANGLES	1:1			12501W90-NP-S-XX-XX-NK	ENDE05				
C1	新增无卤材料	2016.10.19	0.0±0.25	X° REF±6°	APPROVED	Nelson	22.08.01	TITLE XH 2.50mm Pitch 90° SMT Type Wafer	REV		C2	SHEET	2/2
C2	PBJOA202207110001	2022.07.29	0.00±0.15	X° ±3°	DESIGNER	WU	22.08.01						
			0.000±0.08	X° X' ±2°	DRAWN	WN	22.07.29						