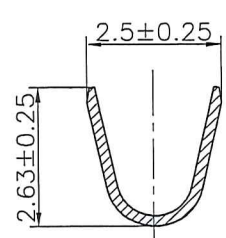
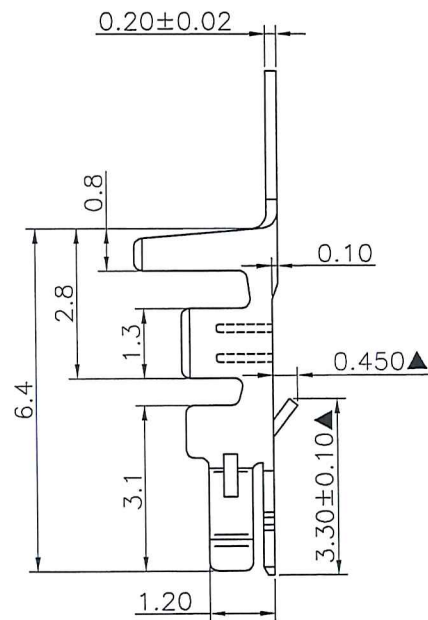
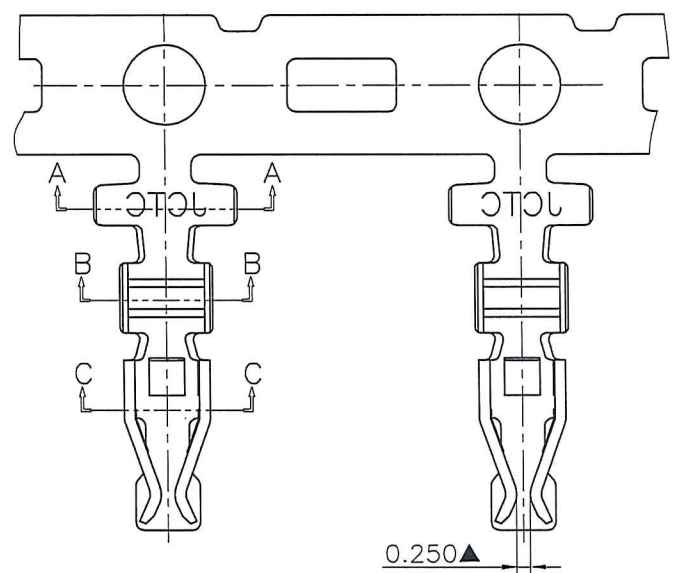


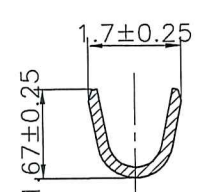
1 2 3 4 5 6 7 8

A
B
C
D
E
F

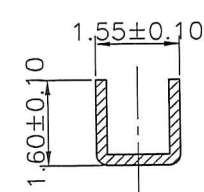
A
B
C
D
E
F



Section A-A



Section B-B



Section C-C



PART NO: 12002T2P-X-XX

0A--Gold-flash 0B--2u" 0C--3u" 0D--4u" 0E--5u"
 0F--10u" 0G--15u" 0H--30u" 0I--50u"
 2--Tin-plated 2E--Tin-plated

Mark
 Blank: Mark
 NK: No Mark



Specification & Ordering Information: $\triangle CA$

Part No	Wire Range	Insulation O.D.	Material	Finish	Qty/reel	Note
12002T2P-2	AWG #24~#22	1.10-1.70mm	Phosphor Bronze	Tin-plated	10,000 PCS	Stamping after plating
12002T2P-2-NK	AWG #24~#22	1.10-1.70mm	Phosphor Bronze	Tin-plated	10,000 PCS	Stamping after plating
12002T2P-2E-NK	AWG #24~#22	1.10-1.70mm	Phosphor Bronze	Tin-plated	10,000 PCS	Plating after Stamping
12002T2P-0X-NK	AWG #24~#22	1.10-1.70mm	Phosphor Bronze	Gold Plated on Contact Area.	10,000 PCS	Plating after Stamping

The product using material and processing must conform to the "WI-PZ-142"HSF technical standard control requirements

REV.	REVISION RECORD	DATE	GENERAL TOLERANCES		SCALE	NAME	DATE	PART NO.	DWG NO.	 TERMINAL&CONNECTORS
C1	增加 "2E" 规格	2015.04.15		LINEAR	1:1	 Nelson	23.01.31	12002T2P-X-XX	ENDE05	
C2	更新图框	2021.11.25		ANGLES	APPROVED					
C3	PBJOA202203040002	2022.05.27		0.0±0.25	X° REF±6°					
C4	依ECN20230131360 $\triangle CA$ 1处	2023.01.31		UNIT: MM	0.00±0.15					X° ±3°
			SIZE: A4	0.000±0.08	X° X' ±2°	DRAWN				TITLE PHD2.0 高脚端子

1 2 3 4 5 6 7 8

H

H

REV C4 SHEET 1/1