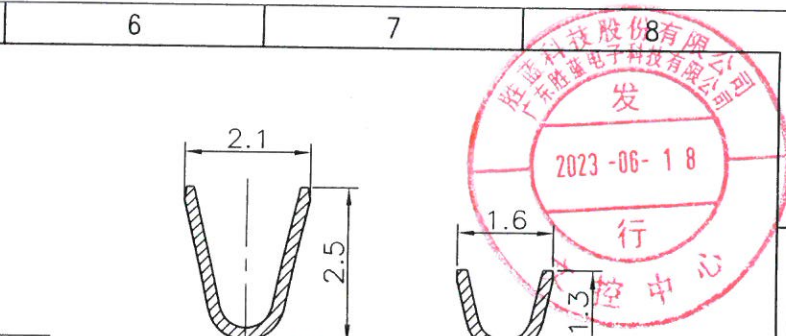
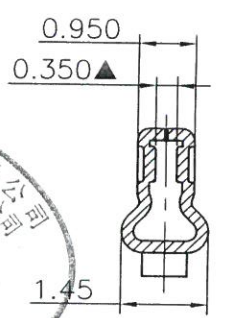
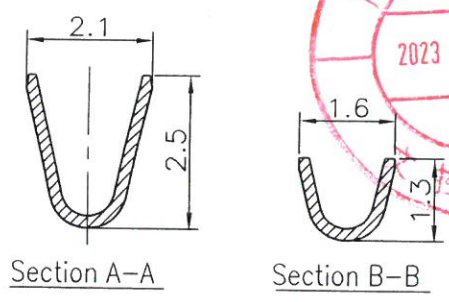
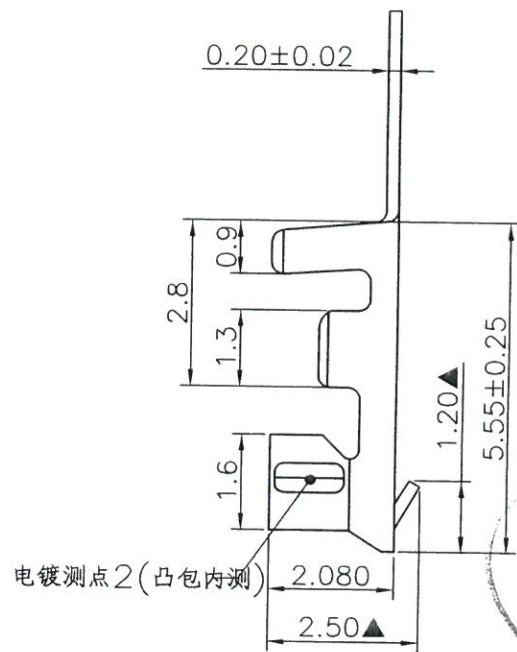
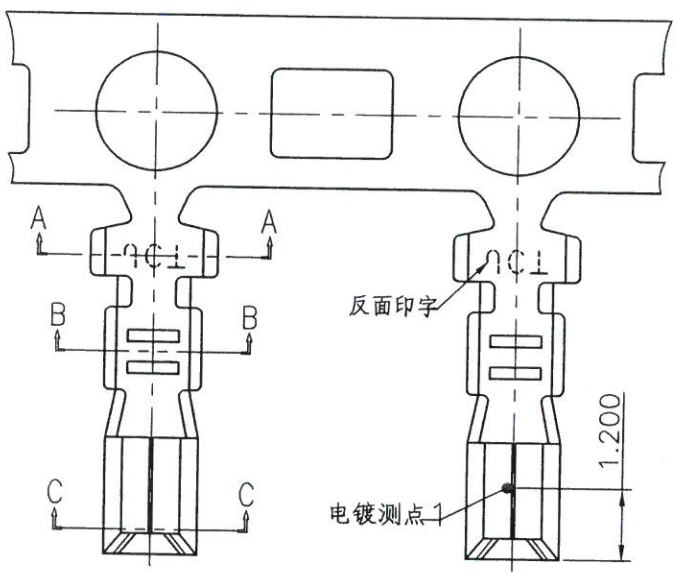


1 2 3 4 5 6 7

A
B
C
D
E
F
G
H



Part No	Wire Range	Insulation O.D.	Material	Finish	Qty/reel
12001TOP-2-1X	AWG #24~#28	1.50mm(max)	Phosphor Bronze	Tin-plated On Ni(测点1)	10,000 PCS
12001TOP-2E	AWG #24~#28	0.9-1.5mm	Phosphor Bronze	Tin-plated 60u"Min.(测点1)	10,000 PCS
12001TOP-2E-01	AWG #24~#28	0.9-1.5mm	Phosphor Bronze	Tin-plated 60u"Min.(测点1)	10,000 PCS
12001TOP-2E-02	AWG #24~#28	0.9-1.5mm	Phosphor Bronze	Sn:30u" MIN Ni:10u" MIN(测点2)	10,000 PCS
12001TOP-2E-03	AWG #24~#28	0.9-1.5mm	Phosphor Bronze	Tin-plated 70u"Min.(测点1)	10,000 PCS
12001TOP-0A	AWG #24~#28	1.50mm(max)	Phosphor Bronze	Gold Flash On Contact Area(测点1)	10,000 PCS
12001TOP-0A-01	AWG #24~#28	1.50mm(max)	Phosphor Bronze	Gold Flash On Contact Area(测点1)	10,000 PCS
12001TOP-5A	AWG #24~#28	1.50mm(max)	Phosphor Bronze	Au 1u"Min On All(测点1)	10,000 PCS
12001TOP-5A-01	AWG #24~#28	1.50mm(max)	Phosphor Bronze	Au 1u"Min On All(测点1)	10,000 PCS
12001TOP-5C	AWG #24~#28	1.50mm(max)	Phosphor Bronze	Au On All,Au 3u"Min On Contact Area(测点1)	10,000 PCS
12001TOP-5C-01	AWG #24~#28	1.50mm(max)	Phosphor Bronze	Au On All,Au 3u"Min On Contact Area(测点1)	10,000 PCS

12001TOP-XX-XX
 Die No.
 1A:A号模
 1B:B号模
 01:01TYPE
 02:02TYPE
 Finish

The product using material and processing must conform to the "WI-PZ-142"HSF technical standard control requirements

REV.	REVISION RECORD	DATE	GENERAL TOLERANCES	SCALE	NAME	DATE	PART NO.	DWG NO.
D2	换图框发行	2021.03.24	LINEAR	1:1		2023.06.16	12001TOP-XX-1X	ENDE05
D3	新增规格	2022.02.15	ANGLES	APPROVED				
D4	依PBJOA202209020008新增规格	2022.09.02	0.0±0.25 X° REF±6°	DESIGNER				
D5	依YB20230518015新增规格、换图框	2023.06.16	0.00±0.15 X° ±3°	DRAWN				
			0.000±0.08 X° X' ±2°	BWK				



REV	D5	SHEET	1/1
-----	----	-------	-----

1 2 3 4 5 6 7 8