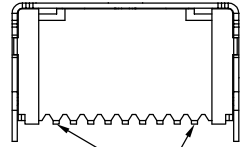
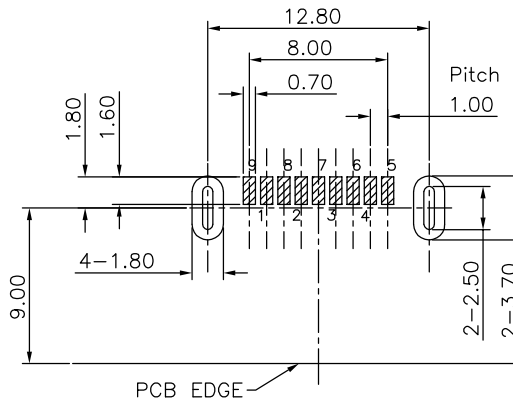
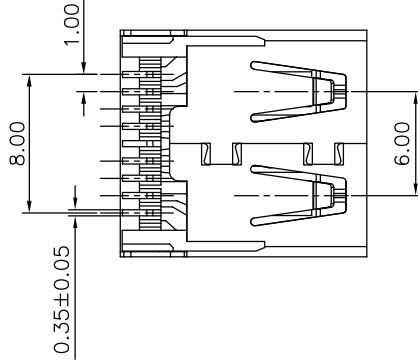
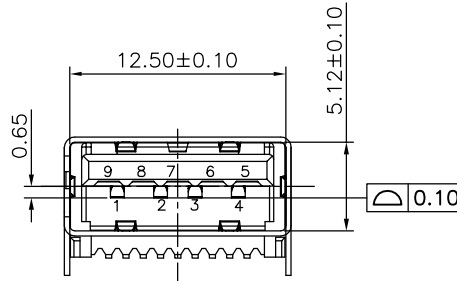
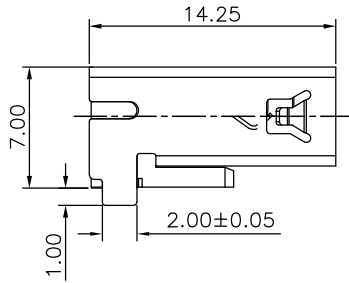


The product using material and processing must conform to the "WL-PZ-001"HSF technical standard control requirements

RoHS



0.10



RECOMMENDED PCB LAYOUT  
TOLERANCE: ±0.05mm

Pin NUMBER	SIGNAL NAME	Pin NUMBER	SIGNAL NAME
1	VBUS	5	StdA_SSRX-
2	D-	6	StdA_SSRX+
3	D+	7	GND_DRAIN
4	GND	8	StdA_SSTX-
		9	StdA_SSTX+
SHELL	SHIELD	SHELL	SHIELD

NOTE:

- MATERIAL SPECIFICATION:
  - HOUSING: LCP BLUE UL94V-0
  - CONTACTS: COPPER ALLOY (C2680).
  - SHELL: COPPER ALLOY.
- PLATING SPECIFICATION:
  - CONTACTS: Ni 50u" MIN. UNDER PLATED OVER ALL. Sn 80u" MIN ON SOLDER AREA Au PLATED ON THE CONTACTS AREA.
  - SHELL: Ni 80u" MIN. UNDER PLATED OVER ALL.
- MECHANICAL PERFORMANCE:
  - INSERTION FORCE: 3.57kgf MAX
  - REMOVAL FORCE: 1.02kgf MIN
  - DURABILITY: 5000 CYCLES.
- ELECTRICAL PERFORMANCE:
  - CURRENT RATING: 1.5A
  - VOLTAGE RATING: 30V MAX
  - CONTACT RESISTANCE: 30mΩ MAX.
  - INSULATION RESISTANCE: 1000MΩ MIN
  - DIELECTRIC WITHSTANDING VOLTAGE: 100V AC MIN.
- ENVIRONMENTAL PERFORMANCE:
  - OPERATING TEMPERATURE: -40°C~+85°C.
- PACKAGE SPEC: TRAY
- P/N ORDER:
 

WLU3F9-09 2 X X X 095

PLATING: 1-G/F  
2-Au 3u"  
5-Au 15u"  
6-Au 30u"

SHELL: 1-SPCC  
2-COPPER ALLOY

HOUSING COLOUR: A-BLACK  
G-BLUE

REV.	REVISION RECORD	DATE	GENERAL TOLERANCES		SCALE:	NAME	DATE	PART.NO:	DWG.NO:
A0	NEW RELEASE	21.01.13	LINEAR	ANGLES	1:1	Wang_jr	21.01.13	WLU3F9-092XXX095	ENDE05
			0.0±0.35	X°REF±6°	APPROVED	Han_Gao	21.01.13	TITLE: USB3.0 A TYPE 9P/F SMT H=1.0mm	 WanLian Teconology Co., Ltd
			0.00±0.25	X°±3°	DESIGNER	Zijun_Huang	21.01.13		
			0.000±0.10	X°X' ±2°	DRAWN				
			UNIT:mm					REV: A0	SHEET: 1/1