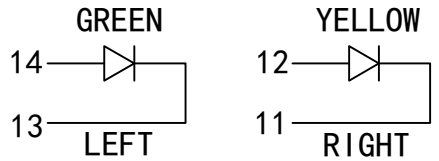
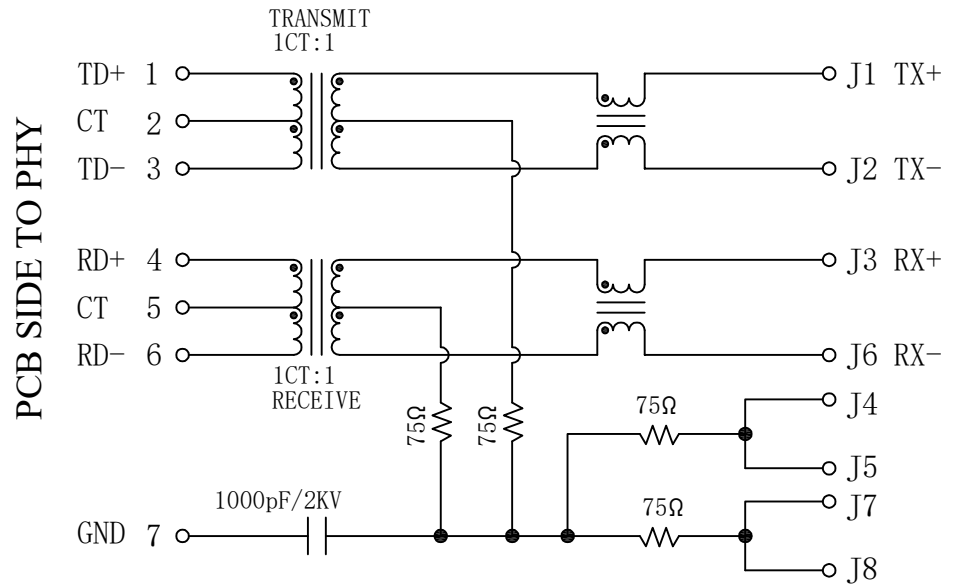


The product using material and processing must conform to the "WL-PZ-001"HSF technical standard control requirements

RoHS



Electrical:

- Turn ratio: 1~3: J1~J2=1CT:1CT(±2%).
4~6: J3~J6=1CT:1CT(±2%).
- OCL: 350uH Min. at 100KHz 100mV 8mA DC.
- Insertion Loss: -1.0 dB Max 1~100MHz.
- Return loss: -20dB Min 1~10MHz;
-16dB Min 10~30MHz.
-12dB Min 30~60MHz.
-10dB Min 60~80MHz.
- Cross talk: -40dB Min 1~30MHz;
-35dB Min 30~60MHz;
-30dB Min 60~100MHz;
- CMR: -30dB Min 1~100MHz;
- Hi-Pot: 1500V AC & 2250V DC
6S 1mA PRI TO SEC

LED Specification

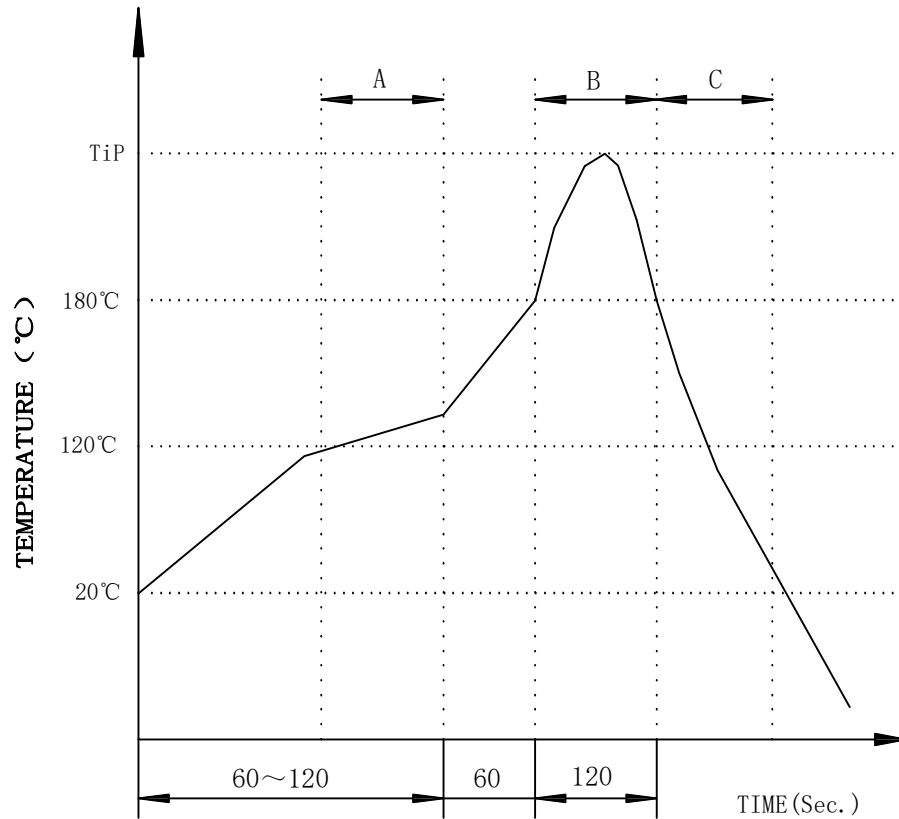
Standard LED Color	LED Wavelength	Foward(A)	Foward(V)
Green	568nm	20mA	1.85-2.45V
Yellow	585nm	20mA	1.7-2.2V

REV.	REVISION RECORD	DATE		GENERAL TOLERANCES		SCALE: 1:1	NAME	DATE	PART.NO:	DWG.NO:	
AO	NEW RELEASE	22.03.02		LINEAR	ANGLES	APPROVED	Wang_jr	22.03.02	WLR4F9-2812A0081	ENDE05	
			UNIT:mm	0.00±0.25	X'±3'	DESIGNER	Han_Gao	22.03.02	TITLE:		REV: A0 SHEET: 2/4
			SIZE: A4	0.000±0.10	X'X' ±2'	DRAWN	Zijun_Huang	22.03.02	RJ45 2X1 10/100BASE		

The product using material and processing must conform to the "WL-PZ-001"HSF technical standard control requirements

RoHS


PROFILE OF WAVE SOLDER

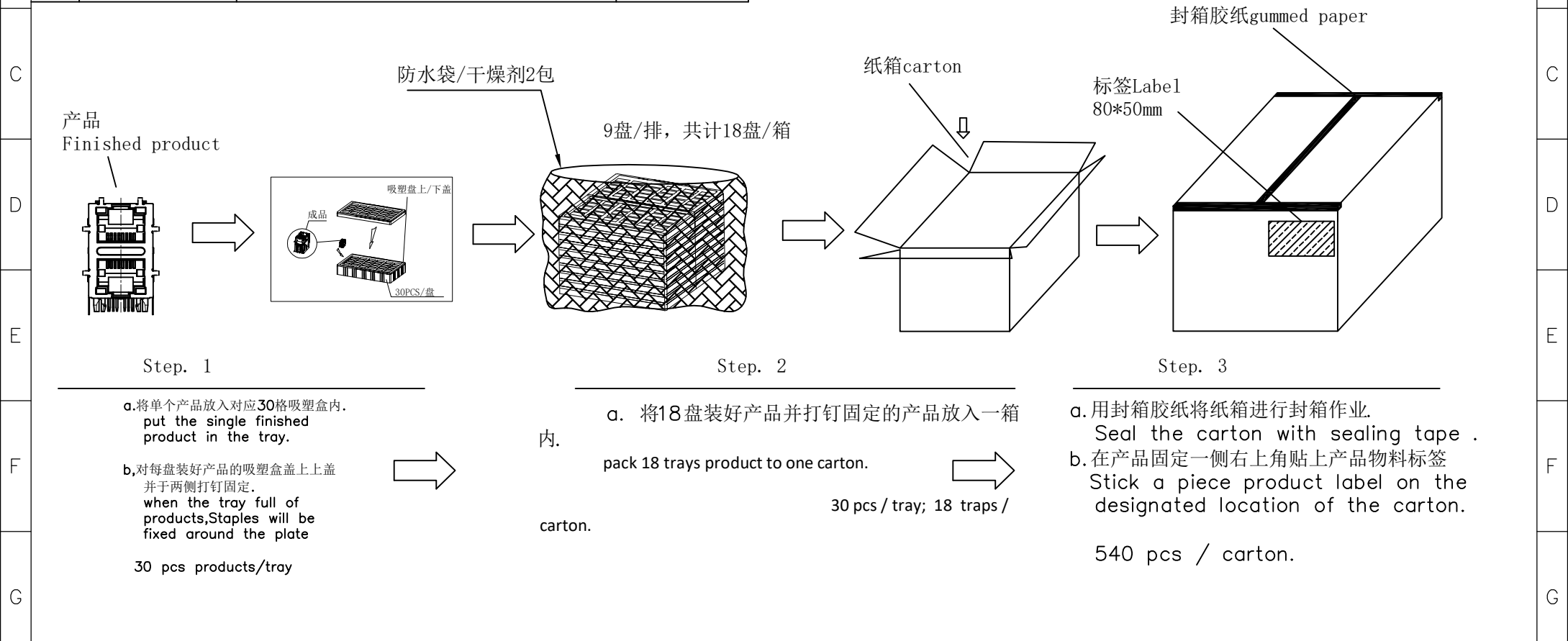


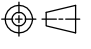

A.Preheating B.Soldering C.Gradual Cooling
 Tip temperature:260±5°C.
 Tip temperature time:5Sec Max.
 Tip melting point of Sn96.5/Ag3/Cu0.5:217°C.

Remarks: after wave soldering, the plastic positioning columns of the product which under the PCB will be slightly melted, but it won't affect its function.

REV.	REVISION RECORD	DATE		GENERAL TOLERANCES		SCALE: 1:1	NAME	DATE	PART.NO:	DWG.NO:	
AO	NEW RELEASE	22.03.02		LINEAR	ANGLES	APPROVED	Wang_jr	22.03.02	WLR4F9-2812A0081	ENDE05	
			UNIT:mm	0.00±0.25	X'±3'	DESIGNER	Han_Gao	22.03.02	TITLE:		REV: A0 SHEET: 3/4
			SIZE: A4	0.000±0.10	X'X' ±2'	DRAWN	Zijun_Huang	22.03.02	RJ45 2X1 10/100BASE		

	1	2	3	4	5	6	7	8
A	No.	材料 material	规格描述 Specification description		Q' TY/Carton	The product using material and processing must conform to the "WL-PZ-001"HSF technical standard control requirements		
	1	吸塑盘Clamshell tray combo	PET材质30格;30 cells PET transparent Size:290*350*35mm		9sets/carton			
	2	订书针Staples	Commonly used specifications		60pcs/carton			
	3	纸箱Carton	K=K colorized; size:370*315*325mm		1pcs/carton			
	4	标签Label	White self adhesive, size:paper80*50mm		1pcs/carton			
5	透明胶纸 gummed paper	wide:55mm, transparent		many				



H	REV.	REVISION RECORD	DATE		GENERAL TOLERANCES		SCALE: 1:1	NAME	DATE	PART.NO:	DWG.NO:		
	AO	NEW RELEASE	21.11.17		LINEAR	ANGLES	APPROVED	Wang_jr	22.03.02	WLR4F9-2812A0081			ENDE05
				UNIT:mm	0.00±0.25	X'±3'	DESIGNER	Han_Gao	22.03.02	TITLE:			
				SIZE: A4	0.000±0.10	X'X' ±2'	DRAWN	Zijun_Huang	22.03.02	RJ45 2X1 1000M 包装规范			
	1	2	3	4	5	6	7	8					