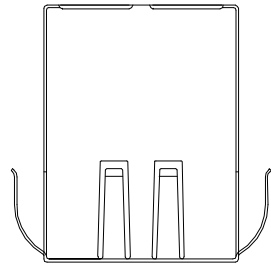
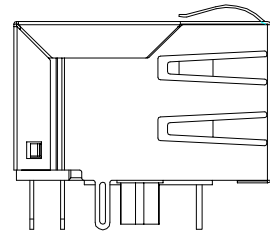


The product using material and processing must conform to the "WL-PZ-001"HSF technical standard control requirements

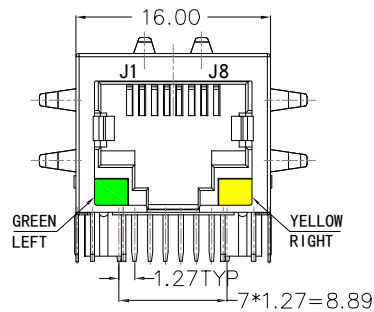
RoHS



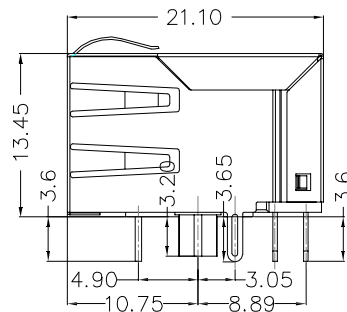
TOP VIEW



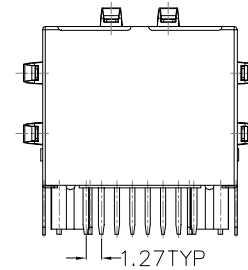
LEFT SIDE VIEW



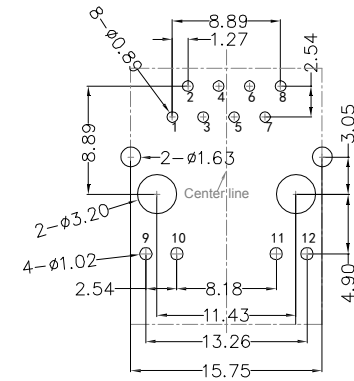
FRONT VIEW



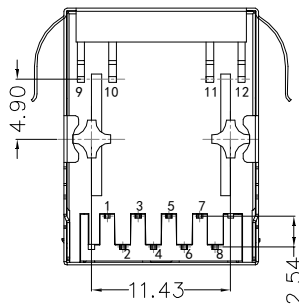
RIGHT SIDE VIEW



BACK VIEW



RECOMMENDED PCB LAYOUT VIEWED FROM COMPONENT SIDE



BOTTOM VIEW

NOTE:

1.MATERIAL SPECIFICATION:

- 1-1.HOUSING: PBT,UL94V-0,BLACK
- TERMINALS BRACKET:PBT,UL94V-0,BLACK
- 1-2.CONTACTS: PHOSPHOR BRONZE C5210,T=0.35MM
- 6U" GOLD PLATING ONCONTACT AREA
- 1-3.SOLDER TABS: C2680,T=0.20MM,
- NICKEL PLATING ON ALL AREA.

2.MECHANICAL PERFORMANCE:

- 2-1.DURABILITY: 750 CYCLES MIN.
- 2-2.MATING FORCE: 23N MAX.

- 3.OPERATING TEMPERATURE: -40°C~+85°C.
- STORAGE TEMPERATURE:-40°C~+85°C.

REV.	REVISION RECORD	DATE		GENERAL TOLERANCES		SCALE: 1:1	NAME	DATE	PART.NO:	DWG.NO:	
A1	NEW RELEASE	22.05.16		LINEAR	ANGLES	APPROVED	Wang_jr	22.05.16	WLR4F9-0813A0064	ENDE05	
				0.0±0.35	X°REF±6°	DESIGNER	Han_Gao	22.05.16	TITLE:		
				UNIT:mm	0.00±0.25	X°±3°	DRAWN	Zijun_Huang	22.05.16	TAB-DOWN 1X1 10/100BASE	
			SIZE: A4	0.000±0.10	X°X' ±2°					REV: A1	SHEET: 1/3

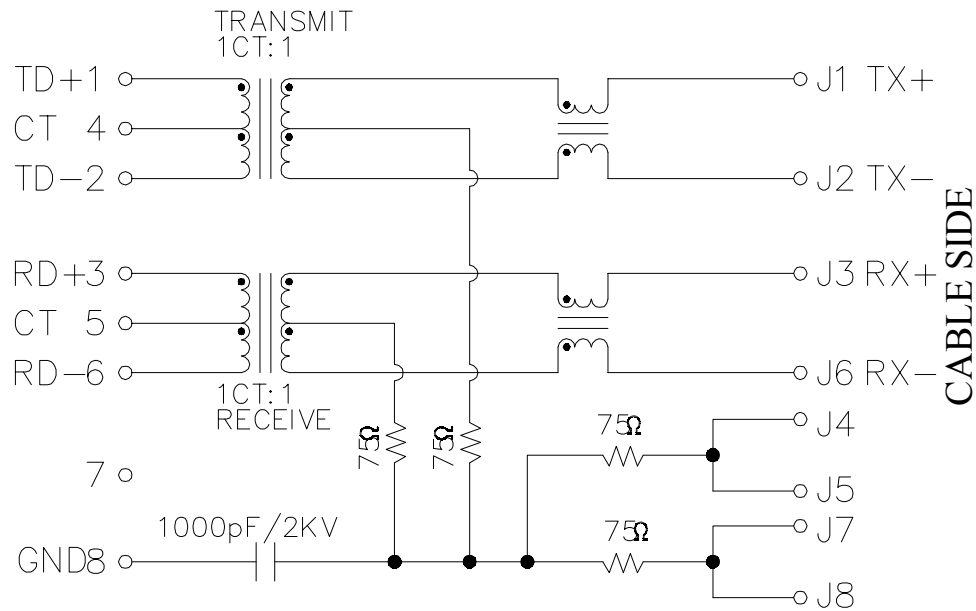
WanLian Technology Co., Ltd

REV: A1 SHEET: 1/3

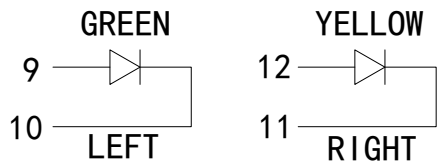
The product using material and processing must conform to the "WL-PZ-001"HSF technical standard control requirements

RoHS

PCB SIDE TO PHY



CABLE SIDE



Electrical:

1. Turn ratio: 1~2: J1~J2=1CT:1CT(±2%).
3~6: J3~J6=1CT:1CT(±2%).
2. OCL: 350uH Min. at 100KHz 100mV 8mA DC.
3. Insertion Loss: -1.0 dB Max 1~100MHz.
4. Return loss: -20dB Min 1~10MHz;
-16dB Min 10~30MHz.
-12dB Min 30~60MHz.
-10dB Min 60~80MHz.
5. Cross talk: -40dB Min 1~30MHz;
-35dB Min 30~60MHz;
-30dB Min 60~100MHz;
6. CMR: -30dB Min 1~100MHz;
7. Hi-Pot: 1500V AC & 2250V DC
6S 1mA PRI TO SEC

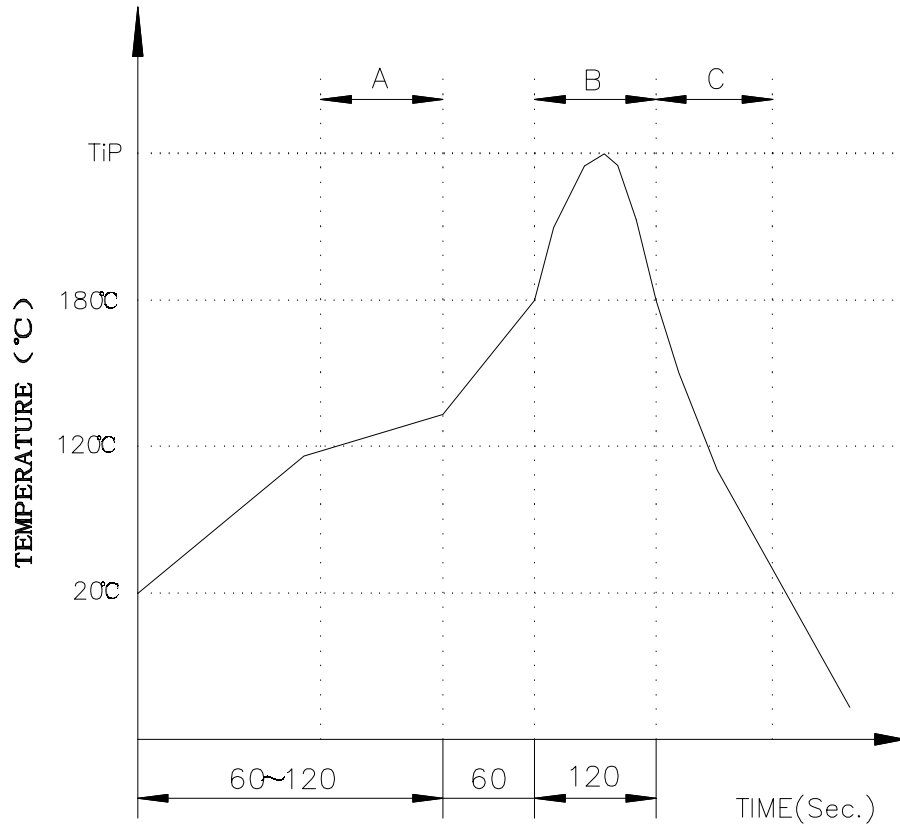
LED Specification

Standard LED Color	LED Wavelength	Foward(A)	Foward(V)
Green	568nm	20mA	1.85-2.45V
Yellow	585nm	20mA	1.7-2.2V

REV.	REVISION RECORD	DATE	GENERAL TOLERANCES		SCALE:	NAME	DATE	PART.NO:	DWG.NO:	 WanLian Teconology Co., Ltd
A1	NEW RELEASE	22.05.16	LINEAR	ANGLES	1:1	Wang_jr	22.05.16	WLR4F9-0813A0064	ENDE05	
			0.0±0.35	X°REF±6°	APPROVED	Han_Gao	22.05.16	TITLE:	REV: A1	
			UNIT:mm	0.00±0.25	X°±3°	DESIGNER	Zijun_Huang	22.05.16	SHEET: 2/3	
			SIZE: A4	0.000±0.10	X°X' ±2°	DRAWN				

The product using material and processing must conform to the "WL-PZ-001"HSF technical standard control requirements

RoHS



A.Preheating B.Soldering C.Gradual Cooling
 Tip temperature:260±5°C.
 Tip temperature time:5Sec Max.
 Tip melting point of Sn96.5/Ag3/Cu0.5:217°C.

Remarks: after wave soldering, the plastic positioning columns of the product which under the PCB will be slightly melted, but it won't affect its function.

REV.	REVISION RECORD	DATE		GENERAL TOLERANCES		SCALE: 1:1	NAME	DATE	PART.NO:	DWG.NO:	
A1	NEW RELEASE	22.05.16		LINEAR	ANGLES	APPROVED	Wang_jr	22.05.16	WLR4F9-0813A0064	ENDE05	
			UNIT:mm	0.00±0.25	X'±3'	DESIGNER	Han_Gao	22.05.16	TITLE:		REV: A1 SHEET: 3/3
			SIZE: A4	0.000±0.10	X'X' ±2'	DRAWN	Zijun_Huang	22.05.16	TAB-DOWN 1X1 10/100BASE		

WanLian Teconology Co., Ltd